



JupiterBike

ROGUE

Electric Bike | Vélo Électrique | Bicicleta Eléctrica

USERS MANUAL

TABLE OF CONTENTS

Structural Diagram	2
Specifications	3
Installing the Kickstand	3
Installing the Front Wheel	4
Installing the Handlebars	4
Installing the Headlight	5
Display Installation	6
Pedals Installation	6
Turning On Your Bike	7
The LCD Display	7
Care & Maintenance	8
Precautions When Riding	9
Safety Warnings	10
Warranty	11
Returns & Exchanges	11

STRUCTURAL DIAGRAM



*Mileage is subjected to weight, road conditions, temperature, wind speed, riding habits, etc. The bike was tested on speed 1 in conditions, which consisted of: 143 lb Load, 77°F temperature, riding on flat road, wind less than .5 mph and with full charge.

Tire Pressure: 5-30 psi

*Please use the original charger that was provided with purchase.

*The warranty becomes invalid in the instance of any unauthorized bike modification.

NOTE:

Manual illustrations are for demonstration purposes only. Illustrations may not reflect exact appearance of actual product. *Specifications subject to change without notice.*

SPECIFICATIONS

MOTOR & BATTERY

Motor Wattage: 48V / 350w

Charging Time: About 5 hours

Waterproof Rating: IP54

Battery Capacity: 48V / 10.4Ah

Battery Type: Lithium Ion

Charging Current 2A max

PACKING CONTENTS:

Rogue Electric Bike

Front Headlight Assembly

Charger

Battery

Front & Rear Mudguards

Multi-Purpose Bike Tool

METER:

Display: LCD Display

Remaining Power: Yes

Speed: Yes

Total Mileage: Yes

Speed Mode: 5 Speed Levels

DIMENSIONS:

Bike Dimensions: H = 47", L = 70"

Seat Height (from ground): 32"

Recommended Rider Height: 5' 4" to 6' 2"

Tire Size: 20" x 4"

COMPOSITION

Suspension: Front & Rear Shock Absorber

Frame: Aluminum Alloy Unibody Frame

Brake Type: Front & Rear Disc

INSTALLING THE KICKSTAND



1. Locate Kickstand, Kickstand Bolts with Washers, & Park Tool.
2. Align the Kickstand behind where it attaches on the left side of the frame.
3. Screw in bolts with washers using the included Park Tool.

INSTALLING THE FRONT WHEEL



1. Arrange the Front Axle with the nut, washer, and 1 shorter spacer on the left side (the side with the brake rotor). Do the same on the other side using the other 2 spacers.



2. Place the axle in the grooves on the front fork, then tighten with a wrench. Test and make sure the wheel does not wobble.



INSTALLING THE HANDLEBARS



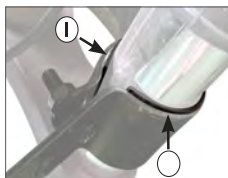
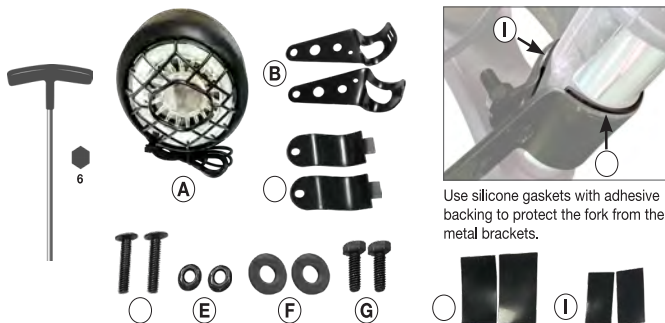
1. Set handlebars on to top bracket and tightened bolts using 5mm hex wrench.



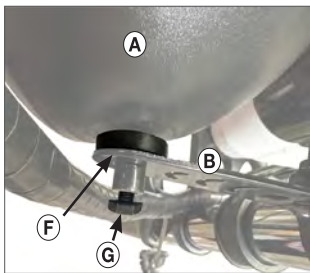
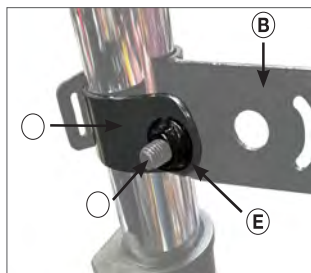
2. Adjust angle to desired angle then tighten down.



INSTALLING THE HEADLIGHT



Use silicone gaskets with adhesive backing to protect the fork from the metal brackets.



The rubber washer goes between the headlight casing and the bracket B.



Attach the left and right turn light assemblies to the headlight brackets B.

DISPLAY INSTALLATION



Loosely attche the left and right display mound to the handlebar.

Attach display to mounts.

Plug in the wire harness to the color coded wire in the front of the bike. The connector has a notch in it to make sure it's connected correctly.

PEDALS INSTALLATION



The right pedal is reverse threaded so twist in the opposite direction. Look for an R engraved on the threaded end. It should hand twist easily on the pedal arm. If it doesn't, unscrew and try again.



Use a 15mm wrench for the last 1 or 2 turns. Repeat with the left pedal on the other side.

TURNING ON YOUR BIKE



Power and Pedal Assist Level buttons are on the handlebar. When ready, press power for 2 seconds to power up your new bike!

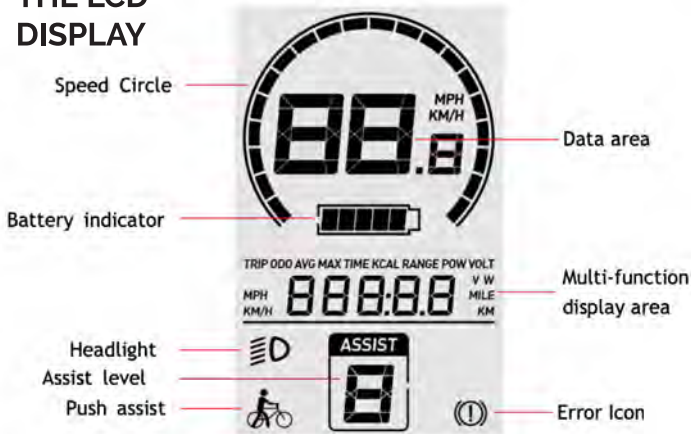


Check tire pressure, then Congratulations! You are ready for your first ride!



Don't Forget! Practice common sense & safety measures when riding your bike.

THE LCD DISPLAY



Go to support.jupiterbike.com for complete LCD Display instructions

CARE & MAINTENANCE

CLEANING YOUR BIKE

To clean the Rogue carefully wipe with a damp cloth, then dry with a dry cloth. Do not use water to clean the Rogue, as the electrical and electronic systems may get wet, resulting in personal injury or malfunction of the bicycle. You should clean your bike after each ride. Lube the chain every so often to keep it smooth.

BIKE CARE

- Keep tires properly inflated. Check for 10-30 psi. before each ride.
- Check brakes regularly. Look for issues before each ride.
- Regularly clean, lube and inspect your chain.
- Check and secure any loose bolts or parts on the Rogue. Hand tighten if needed.

BATTERY CARE

- Protect the bike from salt, water, and moisture.
- Store the battery indoors, in a dry place and at a suitable temperature.
- Charge the the battery in a warm environment (above 50 degrees Fahrenheit)
- When not in use (for more than two weeks) it is best to keep battery charged between 60% to 80% and check on it every month to make sure it is staying at that level. Staying fully charged or fully depleted for long periods of inoperative time will reduce battery life.
- Charging the battery from completely empty to fully charged takes 4 to 6 hours. We recommend you disconnect the battery from the power supply once the light on the charger turns from red to green.
- Avoid intense physical shock, severe vibration, and impact from both the bike and battery.
- Never disassemble the bike or battery.
- When removing plug from battery charging in the bike's frame, grab tip with fingers to remove charger (instead of yanking the cord) as this can cause the port to short-out the charger and/or battery.

What about motor maintenance? Your Rogue motor is designed to be maintenance-free. If a problem arises (a rarity), contact Jupiter Bike Customer Support 813-609-2453 or support@jupiterbike.com.

PRECAUTIONS WHEN RIDING

- Wear the appropriate protection gear such as helmets, knee pads, and elbow pads on your rides to help prevent injury.
- Inspect the bike, brakes, & battery before each ride to ensure all is in working order.
- Do not ride on slopes over 15°
- If you must ride in the rain or snow, please ride at lower speeds and keep a safe stopping distance from objects and vehicles in front of you.
- Children under the age of 16 are not advised to ride the bike.
- Avoid sudden starts and stops.
- Do not lean forwards or backwards while riding, and maintain a safe speed at all times.
- If the battery runs low, keep a low constant speed & charge the battery as soon as possible.
- Do not store your bike in the trunk of a car in hot weather.
- Have a full understanding of local traffic rules and regulations before you ride.
- Be aware of your surroundings at all times, and be sure to always ride in safe conditions.
- Keep a comfortable distance from other riders.
- Use caution when riding in environments with low visibility, if necessary, lower your speed or stroll your bike.
- Do not ride the bike backwards or do any actions that may endanger yourself and others while riding.
- Do not lend your bike to others without letting them become familiar to this manual first.
- Do not ride while ill or under the influence of drugs or alcohol.
- Accelerate slowly when riding. Sudden acceleration may throw you out-of-balance and could cause falls or injury.



Do not ride in snowy or slippery road conditions.



Always ride with both hands on the handlebar.



Never ride down stairs, escalators or elevators.

SAFETY WARNINGS

- For your safety, please read the user manual carefully. Make sure the owner and operator understand and accept all the safety instructions.
- Ride at your own risk and use common sense. You will be responsible for any loss or damage caused by improper use.
- The elderly, pregnant women, children, and those with heart conditions should not use this product.
- Do not exceed the weight limit of 265 pounds. Only 1 rider at a time.
- Inspect each part of the product prior to each use to ensure that it has been correctly maintained and is properly functioning. Riding with improperly adjusted brakes is dangerous and may result in serious injury or death.
- Only operate in safe, suitable locations. Do not ride on roads with obstacles, such as litter, small stones, etc. Avoid riding on steep slopes or in narrow areas. Avoid riding in the rain or on smooth slippery surfaces such as ice or snow. Avoid riding near flammable gas, steam, liquid or dust that could cause a fire.
- If you have had any head, neck or back ailments, or prior surgeries to those areas, Do Not ride this product.
- Do not ride without proper training, at high speeds, on uneven terrain or on slopes.
- Be sure all safety labels are in place and understood prior to riding.
- Do not use near motor vehicles.
- Do not ride after taking prescription medications or drinking.
- Do not answer your phone, carry items or engage in any other activities while riding.
- Always wear appropriate safety gear, including shoes and a helmet. We encourage you to use lighting, reflectors and signal flags.
- Always comply with laws, regulations and ordinances, including local traffic laws.
- Always give way to pedestrians, and be alert to your surroundings, both directly in front of you and in the distance.
- When riding with others, always maintain a safe distance to avoid the possibility of a collision.
- Be sure to maintain your balance when turning, and don't make sharp turns.
- Applying the brakes too hard, or suddenly, can cause a wheel to lock which may cause you to lose control and fall which may result in injury or death.
- Only ride the product with adequate daylight for visibility.
- Do not lift the product from the ground while it is on and the wheels are in motion. This may result in free spinning wheels which may cause injury to yourself or others.
- Do not jump on or off the product or jump while using it, or perform stunts.
- When not in use, store your bike in a cool, dry area away from sunlight and water.
- To clean your bike, use a soft damp cloth to wipe clean, and dry with a dry cloth. To protect internal wiring and electric components, do not soak or rinse your bike with water, and do not clean your bike with corrosive or flammable chemical solvents, like alcohol, gasoline, paraffin or acetone.
- Do not attempt to disassemble, modify, repair or replace the unit or any components of the unit without instruction from Customer Support. This will void any warranty and can lead to malfunctions that may cause injury.

CALIFORNIA PROPOSITION 65



WARNING: this product can expose you to a chemical such as Cadmium that is known to the State of California to cause cancer or birth defects or other reproductive harm. For more information go to: www.p65warnings.ca.gov/product

TROUBLESHOOTING

For troubleshooting or operational issues, please contact Jupiter Tech at 813-609-BIKE (2456) or e-mail sales@jupiterbike.com

WARRANTY:

JUPITER BIKE ROGUE – LIMITED 1 YEAR WARRANTY

The Jupiter Bike Rogue and accessories are manufactured to high quality standards. The Jupiter Bike Rogue is warranted to the original purchaser for one full year from the original purchase date against defective materials or workmanship. This warranty applies to replacement parts only and specifically excludes the tire tread, battery, and wear parts. This warranty becomes void if the original purchaser transfers the product to another individual.

If the Jupiter Bike Rogue suffers damage due to customer modifications and/or is used for any application other than for which it was designated, this warranty is void. This warranty does not include damage due to: (A) neglect, (B) accident, (C) unreasonable use, (D) improper maintenance or (E) any other causes not attributed to defects in material or workmanship. Any implied or otherwise explicit guarantees made through the merchandiser of this product are not covered in this warranty coverage agreement and are expressly disclaimed.

If you feel your Jupiter Bike Rogue is not operating properly and needs a replacement part, contact Jupiter Tech at 813-609-BIKE (2453) or email sales@jupiterbike.com for assistance.

IMPORTANT NOTE:

This machine was designed for certain applications only. Jupiter Tech strongly recommends that this machine NOT be modified and/or used for any application other than that for which it was designated. If you have questions relative to its application, please contact us and we will advise as to its proper use. This warranty gives you specific legal rights, and you may also have other rights which vary from state to state.

RETURNS & EXCHANGES:

Please refer to our website JupiterBike.com for all product exchange information & procedures.

Please keep the original packaging.

813-609-BIKE (2453)

sales@jupiterbike.com

www.Jupiterbike.com

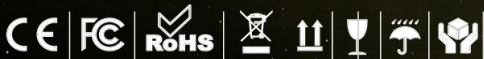
JUPITER TECH 5600 Airport Blvd. TAMPA, FL 33634

ROGUE

DESIGNED IN THE USA | CONCU AUX ESTATS-UNIS | DISENADO EN EE.UU
MADE IN CHINA FABRIQUE EN CHINE HECHO EN CHINA

© Jupiter Tech 2023. All rights reserved. 5600 Airport Blvd Ste C Tampa, FL 33634

To ensure the safety and enjoyment of your electric bike, please read the Operational Manual carefully and in its entirety before riding. Packaging illustrations are for demonstration purposes only. The appearance of actual product may vary. Please keep the original packaging.



US CA AU UK ES

CA FR

MX ES

JP

TW

CH

IN

RU

